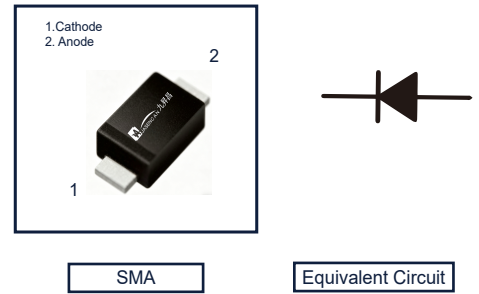


Features

- Ideal for surface mount applications
- Easy pick and place
- Built-in strain relief
- Fast switching speed



MECHANICAL DATA

- Case: Molded plastic
- Epoxy: UL 94V-0 rate flame retardant
- Metallurgically bonded construction
- Mounting position: Any
- Weight: 0.063 grams

Maximum Ratings and Electrical Characteristics

Rating 25 C ambient temperature unless otherwise specified. Single phase half wave, 60Hz, resistive or inductive load. For capacitive load, derate current by 20%.

Parameter	Symbols	RS1M	Units
Maximum Repetitive Peak Reverse Voltage	V_{RRM}	1000	V
Maximum RMS voltage	V_{RMS}	700	V
Maximum DC Blocking Voltage	V_{DC}	1000	V
Maximum Average Forward Rectified Current .375"(9.5mm) Lead Length at $T_a=55^{\circ}C$	$I_{F(AV)}$	1.0	A
Peak Forward Surge Current, 8.3ms Single Half Sine-wave Superimposed on Rated Load (JEDEC method)	I_{FSM}	30	A
Max Instantaneous Forward Voltage at 1.0A	V_F	1.3	V
Maximum DC Reverse Current $T_a = 25^{\circ}C$ at Rated DC Reverse Voltage $T_a = 100^{\circ}C$	I_R	5.0	μA
		100	
Maximum Reverse Recovery Time ⁽¹⁾	T_{rr}	500	nS
Typical Junction Capacitance ⁽²⁾	C_j	15	pF
Operating and Storage Temperature Range	T_J, T_{stg}	-65~+150	$^{\circ}C$

(1) Reverse Recovery Time test condition: $I_F=0.5A$, $I_R=1.0A$, $IRR=0.25A$

(2) Measured at 1MHz and applied reverse voltage of 4.0V D.C.

Ordering information

Product ID	Pack	Naming rule	Marking	Qty(PCS)
RS1M	SMA	<div style="border: 1px solid black; padding: 5px; display: inline-block;"> RS1M </div> ↓ 产品名称 product name	RS1M	2000

Typical Characteristics

FIG.1-TYPICAL FORWARD CHARACTERISTICS

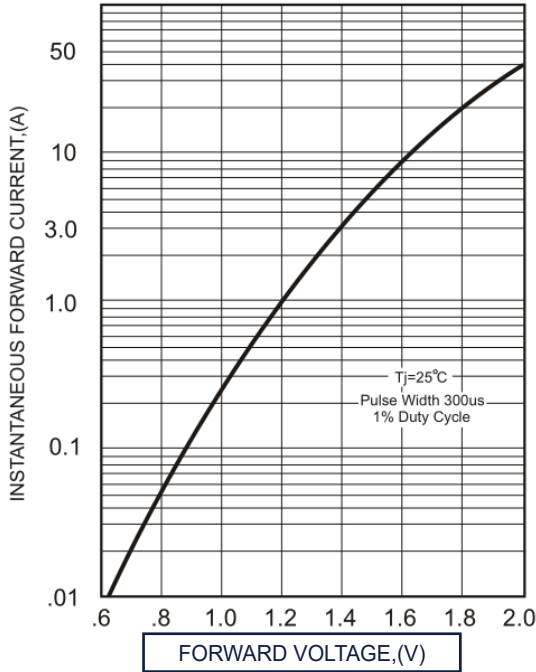


FIG.2-TYPICAL FORWARD CURRENT DERATING CURVE

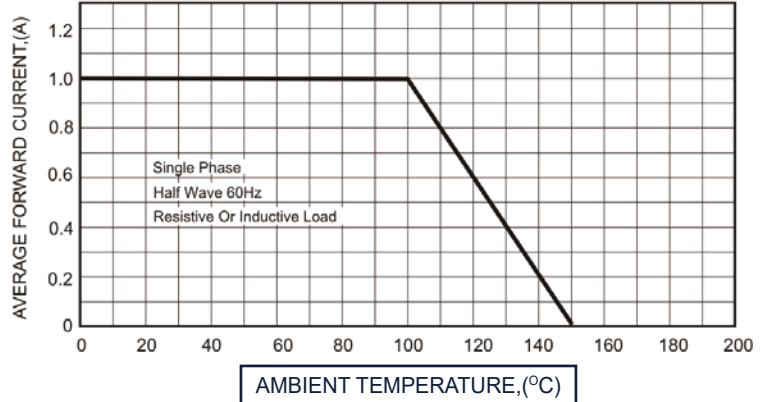


FIG.4-MAXIMUM NON-REPETITIVE FORWARD SURGE CURRENT

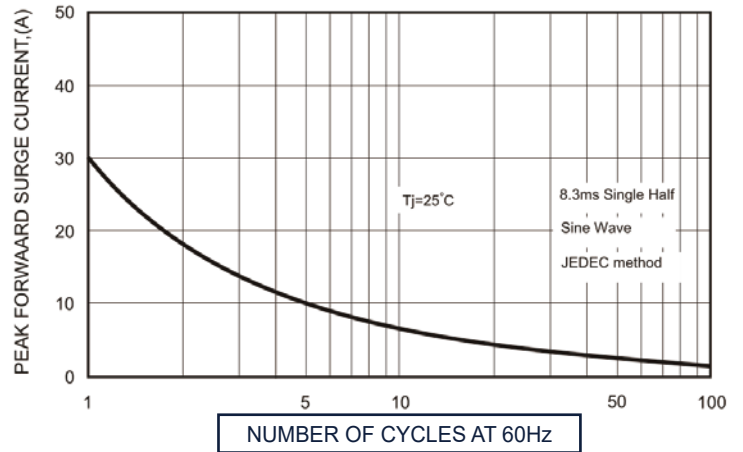
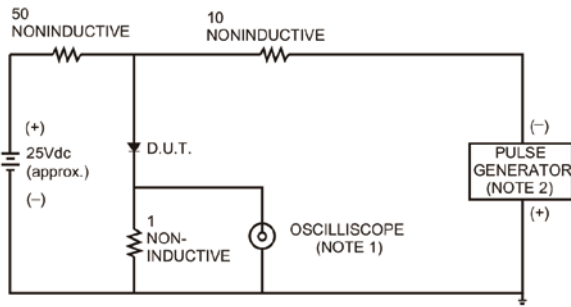


FIG.3- TEST CIRCUIT DIAGRAM AND REVERSE RECOVERY TIME CHARACTERISTICS



NOTES: 1. Rise Time= 7ns max., Input Impedance= 1 megohm, 22pF.

2. Rise Time= 10ns max., Source Impedance= 50 ohms.

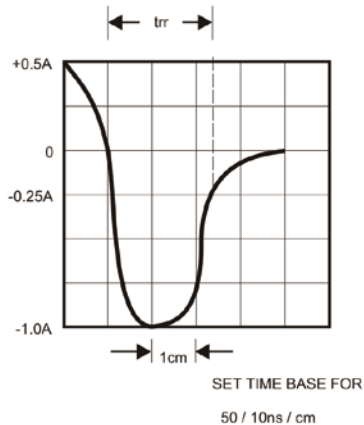
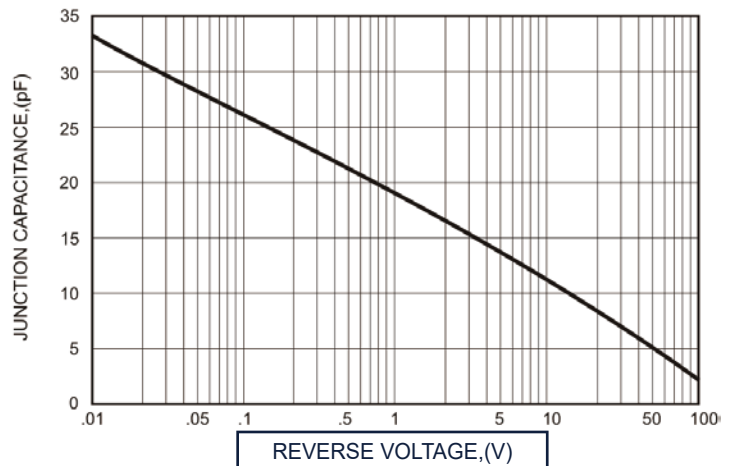


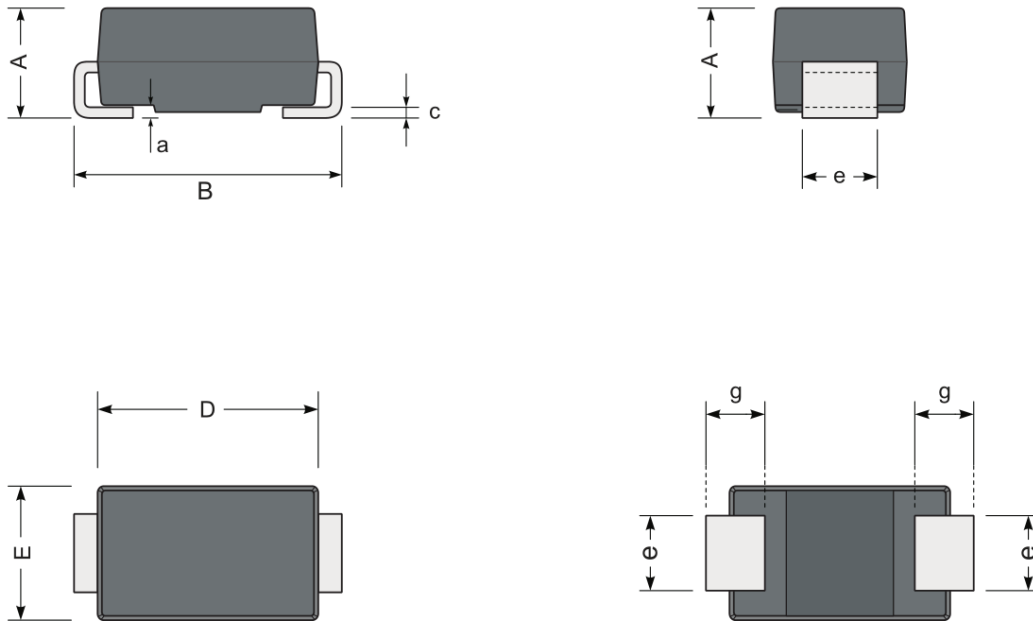
FIG.5-TYPICAL JUNCTION CAPACITANCE



PACKAGE OUTLINE

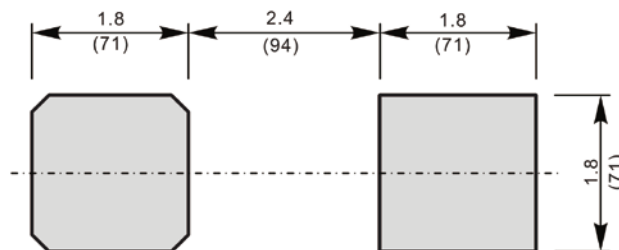
Plastic surface mounted package; 2 leads

SMA



UNIT		A	D	E	B	c	e	g	a
mm	max	2.2	4.5	2.8	5.3	0.31	1.6	1.5	0.3
	min	1.9	4.0	2.4	4.8	0.15	1.3	0.9	
mil	max	87	181	110	209	12	63	59	12
	min	75	157	94	189	6	51	35	

The recommended mounting pad size



Unit: $\frac{\text{mm}}{\text{mil}}$